



FOR LEASE

Iconic building next to downtown Victoria. 12,367 SF of retail, showroom, office and warehouse space. Available now.

2122 Douglas Street
Victoria, BC



Leasing and Management by
Homer Holdings Limited

LEASING INQUIRES

DAVID RUSSELL

604-306-4466

dbr@homerholdings.com

RANDY SPECK

604-329-6516

rsc@homerholdings.com

*Will cooperate with agents



Key Features

RETAIL/OFFICE SPACE

Excellent street exposure

WAREHOUSE- MAIN FLOOR

11'-0" high ceiling clear

Two dock level loading doors

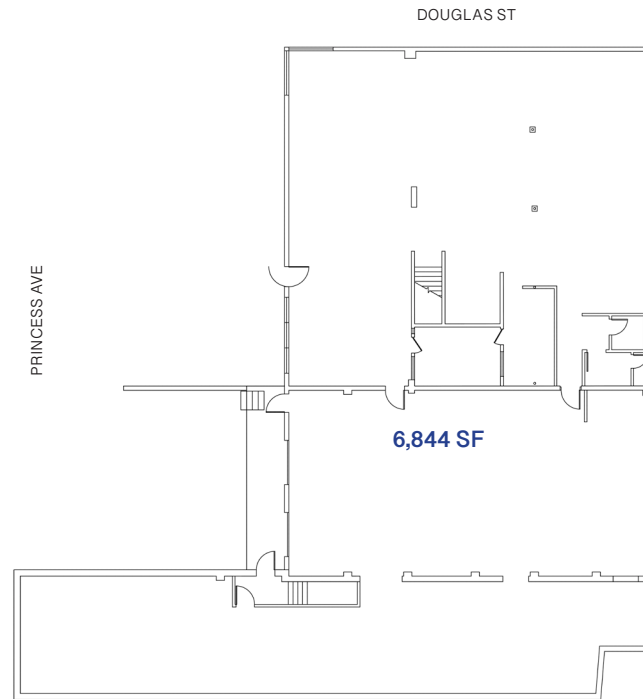
WAREHOUSE-LOWER FLOOR

Potential grade level door

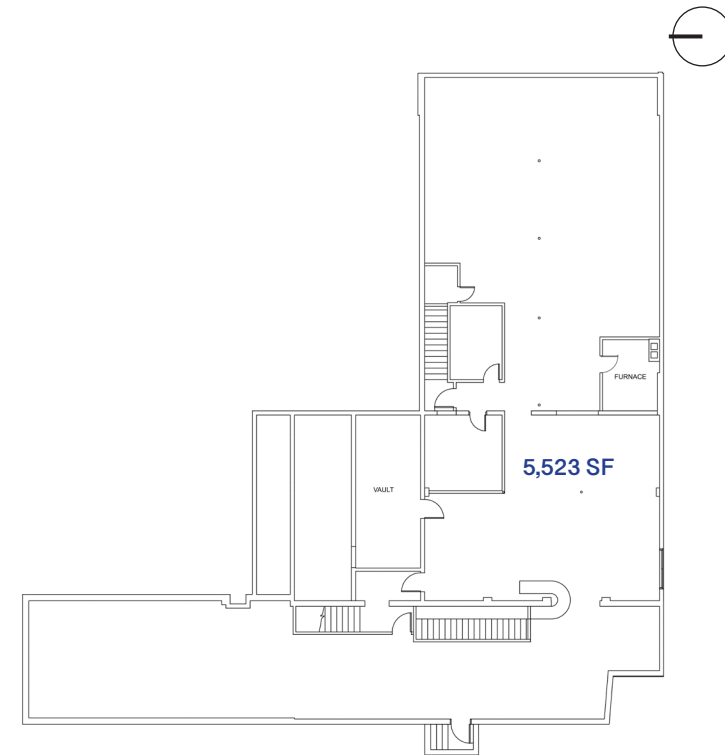
PARKING

Fully Fenced staff parking lot

Customer parking in front



MAIN FLOOR



LOWER FLOOR

